

# Loughborough College Group Job Description

## 1. Job Details

Job Title: Lecturer in Bricklaying – Brooksby College  
 Department: Construction  
 Reporting To: Curriculum Manager  
 Competency Level: Teaching 2  
 Hay Grade: G3/4  
 Salary: £32,570 - £38,175 per annum  
 Date of Job Evaluation: tbc  
 Date: April 2026

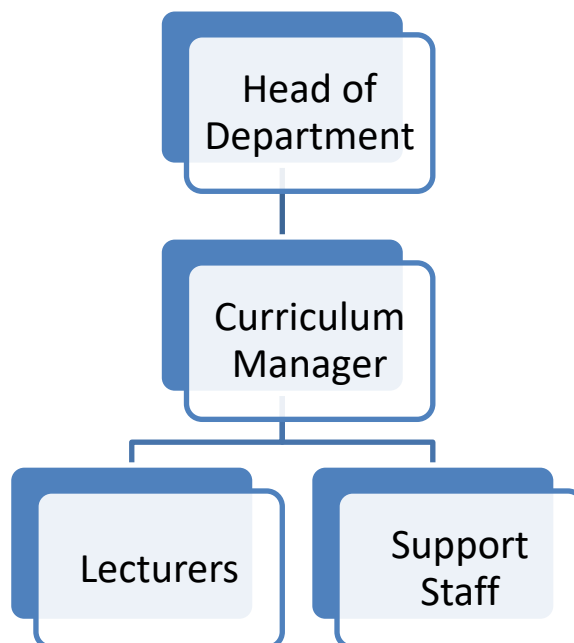
## 2. Job Purpose

To deliver inspiring teaching and learning where knowledge being transferred is predominantly know-why or conceptual knowledge.

## 3. Dimensions

*Not applicable.*

## 4. Organisation chart



Name:	Job description Template	Owner:	HR
Document Reference:	HR-TCG-162	Last Review:	Aug 2025
Version:	1.0	Next Review:	Aug 2027

## 5. Diversity and Inclusion

Loughborough College Group is committed to operating with Fairness, Respect, Equality, Diversity, Inclusion and Engagement at the heart of our organisation.

We are all responsible for ensuring that all individuals receive the same opportunities to develop, grow and achieve their full potential, regardless of personal circumstances and individual differences.

Our FREDIE values are relevant to the whole College community and support the way in which we work and interact with each other.



## 6. Key Responsibilities

### Role specific responsibilities

- Support learners through their programme and the specific qualification aims within.
- Write schemes of work and lesson and review plans.
- To devise and implement a learning and assessment plan for each individual learner.
- To devise and produce materials for use by learners
- To manage the formal assessment process to include maintenance of all assessment records
- Be flexible in the delivery of education and training
- Ensure completion of portfolios, coursework, own work and all other programme related student outputs within the scheduled scheme
- Liaise with all stakeholders (internal and external) to deliver programme
- For work-based delivery aspects of a programme carry out reviews in a timely fashion, which include liaison with employers, incorporation of functional skills, additional learning support arrangements and overall assessment plan
- To manage learning programmes and act a Course Leader as required

- To undertake tutorial and pastoral roles with learners
- Maintain confidentiality rules in respect of the learner and their workplace
- Manage the learner disciplinary and rewards process
- To maintain a management tracking system for learners in accordance with College guidelines
- To ensure quality assurance systems comply with internal and external standards specifically in relation to external/internal verification, review, evaluation and self-assessment.

### Core Responsibilities

- To promote the College's vision, mission and strategic objectives and to promote the values and behaviours which underpin them at all times.
- To act as an ambassador for the college group in dealings with all external agencies (other colleges, funding bodies, suppliers, learners, parents and employers) and to maintain the highest standards of professional conduct.
- To promote Loughborough College Group and its subsidiaries as the first-choice destination for learners, employers and staff alike.
- To proactively promote equality of opportunity in all aspects of the work role and to assist in the leadership and management of compliance to the agreed Health & Safety policy and practice.
- To promote a positive approach to security and discipline within the College community.

## 7. Key Result Areas

Action	Result
<b>Lead on curriculum development.</b>	Resourced programmes of study.
<b>Lead on the planning, preparation, delivery, and assessment of effective learning programmes.</b>	To ensure students achieve.
<b>Create and apply effective differentiation and stretch and challenge techniques.</b>	To ensure all students achieve to the best of their ability.
<b>Monitor progress in lessons and disseminate learner progress with key staff.</b>	To ensure students are on track to achieve their target grades.
<b>Lead on development of assessments/assessment strategies and give high quality feedback.</b>	To ensure students can meet their targets and progress.
<b>To participate in moderation and internal verification.</b>	To ensure Awarding Organisation criteria are met and academic standards maintained.
<b>Participate in and deliver staff development opportunities.</b>	To ensure teaching and learning is up to date and maintained to the highest standards.
<b>To play a key role in quality assurance and quality improvement.</b>	To ensure Awarding Organisation requirements and College KPIs are met.
<b>Participate in department activities and meetings.</b>	Increased recruitment, broader knowledge of department.

## 8. Key Working Relationships and Communications

**Internal:** Head of Department, Curriculum Manager, Curriculum Staff, Support Services Staff

**External:** Awarding Bodies

## 9. Competency Profile

The following profile is a description of the required competencies of the role:

Working with Excellent People	Responsiveness
<p>Inspires people to reach great heights of performance and success through leadership considering the FREDIE values.</p> <p>Effectively manages team to deliver a service, providing clear direction and support. Increases employee engagement Communicates with impact and sophistication; adapts style and uses varied media to meet different audience needs.</p>	<p>Handles change with responsiveness and adaptability. Looks for opportunities to do own job better; puts forward ideas.</p> <p>Always considers longer term impact of own tasks            Uses a structured and collaborative approach to solving problems in own and related work areas.            Reaches clear, definite and timely decisions based on thorough understanding of the facts and an eye to their practical implications.</p> <p>Multi-tasks and consistently delivers own and team objectives on time and to standard.</p>
Ensuring Financial Sustainability	Self-Awareness
<p>Works efficiently; makes best use of the College's resources. Own work consistently contributes to the strategic aims of the College.</p>	<p>Maintains a healthy and safe environment for College people and visitors. Swiftly implements changes to keep up with legislation and best practice.</p> <p>Improves diversity, equality and inclusion in own area; challenges inappropriate behaviours.            Understands self and others; communicates with sensitivity; handles difficult people and events effectively.</p>
Delivering Excellent Quality	
<p>Anticipates customer needs; prevents poor service; delivers consistently high-quality service. Credibly represents the College by demonstrating a superior knowledge of subject area - current and related topics.</p> <p>Takes ownership for own development, supports that of others and develops beyond own role. Uses online collaboration and networking as a means of developing, exchanging and communicating information.</p>	

## 10. Knowledge, Skills and Experience (Person Specification)

QUALIFICATIONS		ESSENTIAL	DESIRABLE	HOW ASSESSED
1.	Possess or be willing to work towards a teaching and assessing qualification	•		Application/ Interview
2.	Possess a relevant vocational qualification at level 3 or above	•		Application/ Certificates
3.	Possess qualifications in Maths and English Levels 4-9 (GCSE Grades A-C) or equivalent	•		Application/ Certificates
EXPERIENCE				
4.	Significant experience of designing and delivering vocational/ academic programmes to students in an FE context	•		Application/ Interview
5.	Experienced to the minimum industry standards required for teaching, with recent experience working in the relevant industry	•		Application/ Interview
6.	Work based learning experience		•	Interview
7.	Experience of promoting positive learner behaviour	•		Interview
8.	Experience of supporting and managing diverse groups of students	•		Application/ Interview
9.	Proven experience to inspire and motivate students to achieve excellent results	•		Application/ Interview
10.	Experience contextualising and embedding learning to meet specific learning needs.	•		Application/ Interview
SKILLS & KNOWLEDGE				
11.	Up to date knowledge of the subject/vocational area	•		Application/ Interview
12.	Good interpersonal skills, able to work well with a range of people and be able to respond clearly and flexibly to different work tasks	•		Interview
13.	Able to work independently and within a team contributing to the development of teaching, learning and assessment	•		Interview
14.	Knowledge of effective methods of assessment and feedback to support achievement	•		Application/ Interview
15.	Effective time management skills and be able to work to deadlines	•		Interview
16.	Evidence of collaboration with employers	•		Interview
17.	Demonstrate your understanding of diversity and inclusion	•		Application/ Interview
BEHAVIOURS				
18.	Demonstrates an awareness of learners' and employers' needs	•		Interview
19.	Ability to travel for business purposes	•		Interview

20.	Promote the College's equal opportunities policy and practices	•		Interview
21.	Ensure the safeguarding of students	•		Interview

#### Notes

1. A satisfactory Enhanced Disclosure & Barring Service check is required for this post. Loughborough College Group is committed to safeguarding and promoting the welfare of children and young people and expects all staff and volunteers to share this commitment.
2. As part of this role, you are expected to undertake reasonable additional duties such as Exam Invigilation, Welcoming Students and Staff onto campus, supporting with open days and promoting a safe environment across the college. This is expected of you in the post mentioned above and all other posts with the College Group.
3. This job description and person specification was prepared in April 2026 and may be amended in light of changing circumstances following discussion with the post holder.

## 11. Job Description Agreement

<b>Job Holder Signature</b>		<b>Date</b>	
-----------------------------	--	-------------	--